

Components

Warming Drawer		#85747CE	
304 Grade 1.7mm Gauge Stainless Steel Construction.			
Variable Temperature Control.			
Moisture Vent Control, Heat-On Light.			
Dimensions		Cut out Dimensions	
L 76.2 cm	D 50.7 cm	H 29.4 cm	L 72.5 cm D 52.0 cm H 25.5 cm
CTN Length	0.82 Mts	CTN Height	0.32 Mts
CTN Width	0.59 Mts	CTN Weight	32 Kg 1 Pcs

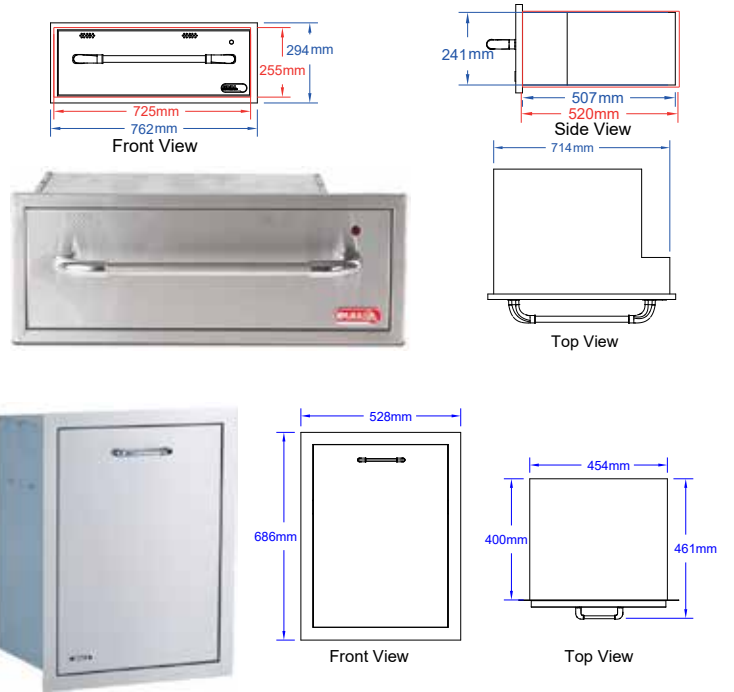
Large Pull Out Trash Drawer		#56925	
304 Grade 1.7mm Gauge Stainless Steel Construction.			
Slide-Out Drawer with Hanging Trash Can.			
Soft Closing System.			
Dimensions		Cut out Dimensions	
L 52.8cm	D 40.0cm	H 68.6cm	L 46.5cm D 41.0cm H 62.0 cm
CTN Length	0.56 Mts	CTN Height	0.45 Mts
CTN Width	0.71 Mts	CTN Weight	23 Kg 1 Pcs

76cm Door/Drawer Combo		#25876	
304 Grade 1.7mm Gauge Stainless Steel Construction.			
Fully Enclosed Drawer Components - Soft Closing System.			
Double Lined Doors.			
Dimensions		Cut out Dimensions	
L 83.8 cm	D 52.1 cm	H 55.9 cm	L 79.0 cm D 52.8 cm H 50.5 cm
CTN Length	0.87 Mts	CTN Height	0.59 Mts
CTN Width	0.57 Mts	CTN Weight	30.3 Kg 1 Pcs

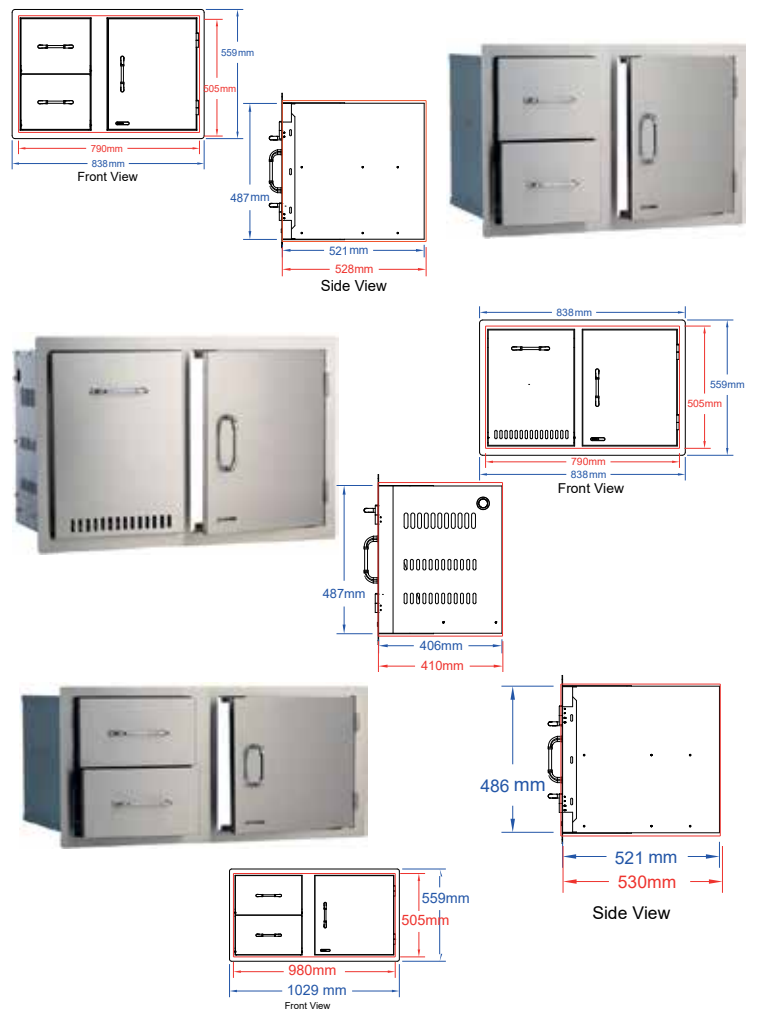
Gas Tank Drawer/Door combo		#65784	
304 Grade 1.7mm Gauge Stainless Steel Construction.			
Single Access door.			
Trash/Propane Drawer - Soft Closing System.			
Dimensions		Cut out Dimensions	
L 83.8 cm	D 40.6 cm	H 55.9 cm	L 79.0 cm D 41.0 cm H 50.5 cm
CTN Length	0.46 Mts	CTN Height	0.59 Mts
CTN Width	0.57 Mts	CTN Weight	30.3 Kg 1 Pcs

97cm Door/Drawer Combo		#55875	
304 Grade 1.7mm Gauge Stainless Steel Construction.			
Fully Enclosed Drawer Components - Soft Closing System.			
Double Lined Doors.			
Dimensions		Cut out Dimensions	
L 102.9 cm	D 52.1cm	H 55.9 cm	L 98.0 cm D 53.0 cm H 50.5 cm
CTN Length	1.08 Mts	CTN Height	0.59 Mts
CTN Width	0.57 Mts	CTN Weight	33.0 Kg 1 Pcs

Drawers



Door/ Drawer Combos



*Red measurements shown are the recommended cut-out dimensions